



Noviscent Pure Alpha Fund

April 2020

Disclaimer

Noviscent is a Registered Fund Management Company under the MAS, a member of the Alternative Investment Manager Association (AIMA) and a signatory to the Standards Board for Alternative Investments (SBAI) since 2018.

The material in this presentation has been prepared by Noviscent Pte Ltd UEN 201625472M and is general background information about Noviscent's activities as at the date of this presentation. This information is given in summary form and does not purport to be complete. Information in this presentation, including any forecast information, should not be considered as advice or a recommendation to investors or potential investors in relation to holding, purchasing or selling securities or other financial products or instruments and does not take into account your particular investment objectives, financial situation or needs.

Any information contained in this presentation is directed only at qualified investors as defined under the Securities and Business (Conduct of Business) Regulations to be read with the Securities and Futures Act (Cap. 289) of Singapore. The information in this presentation is not provided to and may not be used by any person or entity in any jurisdiction where the provision or use thereof would be contrary to the applicable laws, rules or regulations of any governmental authority, regulatory or self-regulatory organization or clearing organization, or where Noviscent Pte Ltd is not authorized to provide such information or services.

Noviscent

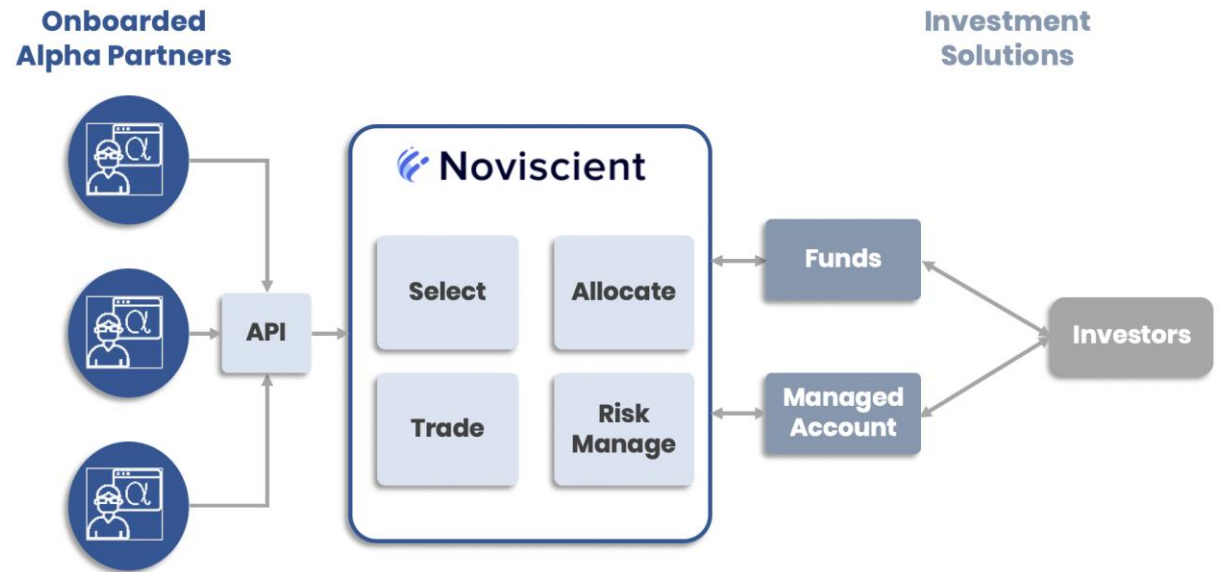
Introduction



- We offer total alignment with investors with a focus on performance and transparency
- Our strategy uses new approaches and technologies to build better products for our investors
- We enable investors to systematically access alpha from strategies all around the world

Our Approach

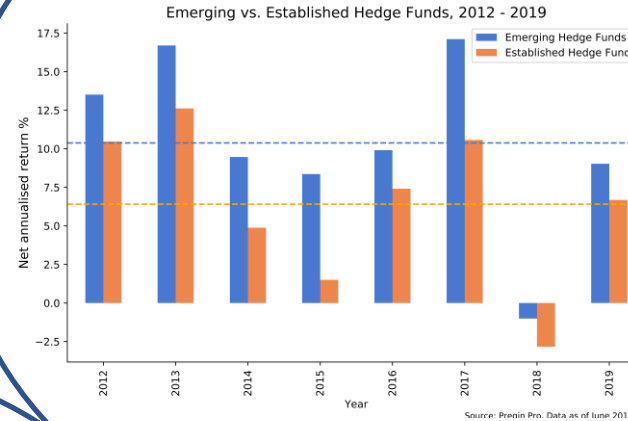
- We source trading strategies from partners all around the world
- We systematically select uncorrelated strategies with alpha
- We dynamically allocate capital internally, saving investors' costs on due diligence
- Investors get alpha with high liquidity and transparency
- We impose clawback on losing strategies to ensure interest alignment with alpha partners



Value Proposition

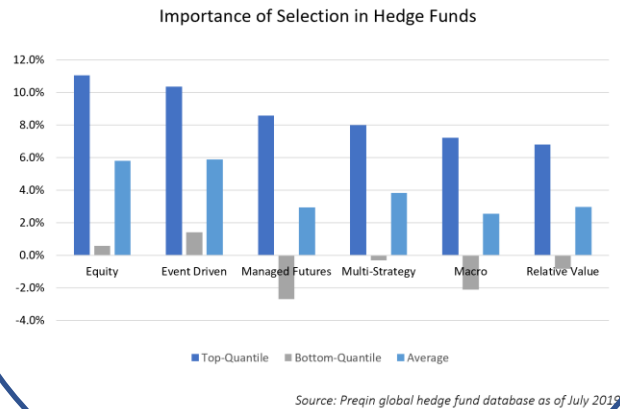
ACCESS

Access to niche trading groups with proven track records



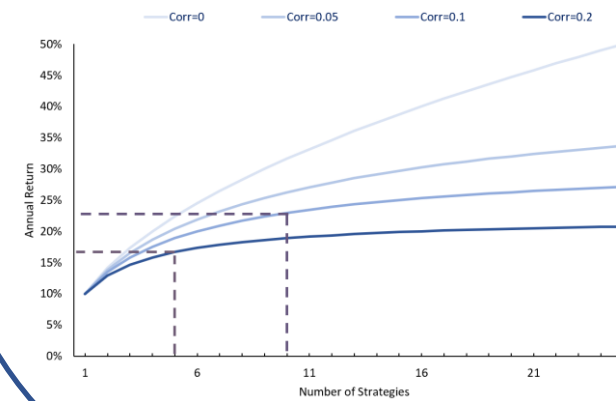
SELECTION

Optimal strategy selection using ML algorithms



ALLOCATION

Allocate dynamically to selected strategies



Noviscient Pure Alpha Fund

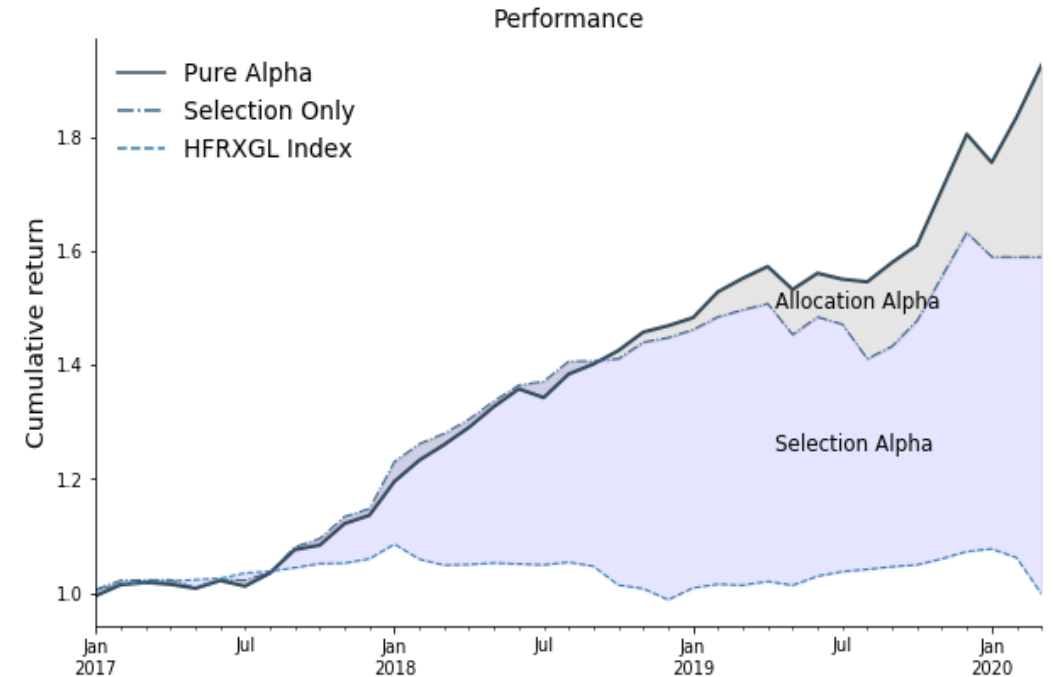
Pure Alpha Fund

OBJECTIVE

The Pure Alpha Fund offers uncorrelated excess returns with transparency and liquidity.

BENEFITS FOR INVESTORS

- Attractive and scalable alpha from systematic access to global strategies
- Due diligence costs on individual funds are eliminated as investor capital never leaves our platform
- Transparency and monthly liquidity puts investors in control of their capital
- Real-time monitoring ensures tight risk control and governance
- Fee alignment with loss claw back



| | Pure Alpha | MSCI World | HFRXGL Index |
|--------------|------------|------------|--------------|
| Return p.a. | 22.4% | 10.0% | 0.0% |
| Volatility | 8.0% | 14.5% | 3.3% |
| Sharpe Ratio | 2.1 | 0.1 | -0.3 |
| Max Drawdown | -5.3% | -33.9% | -11.2% |

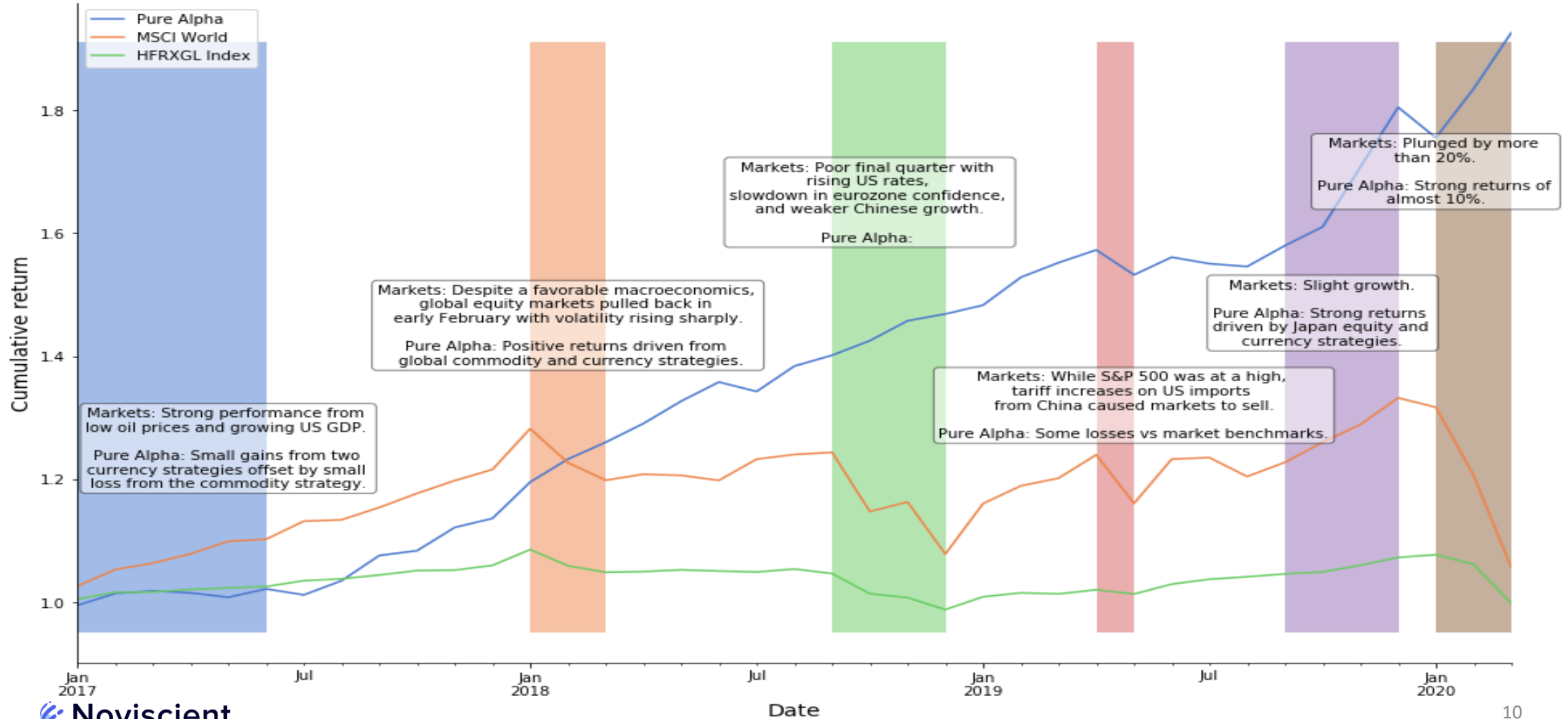
Investment Process

Building an alpha capture engine - a repeatable and scalable process



Strong Risk Control

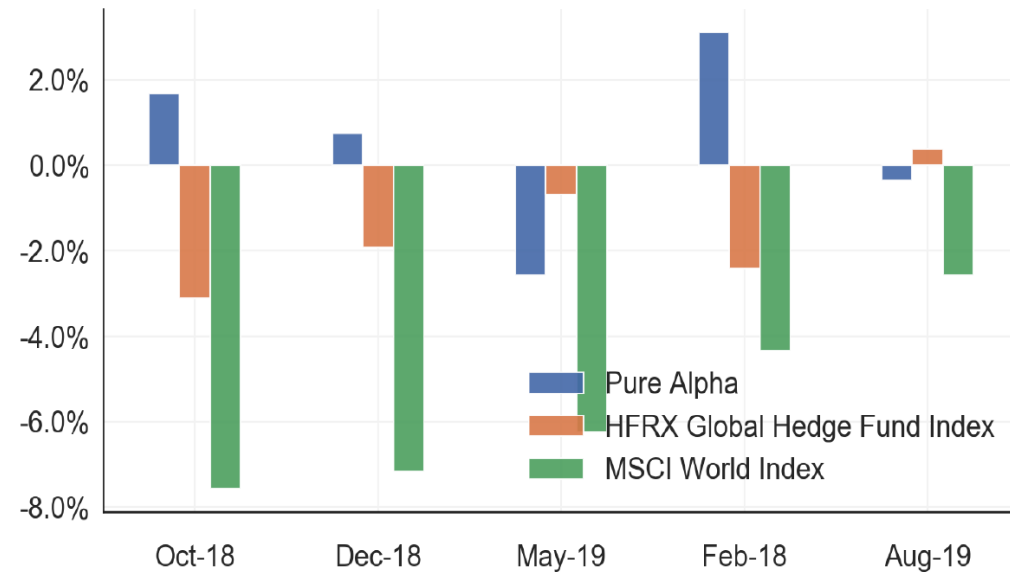
Returns are independent of markets



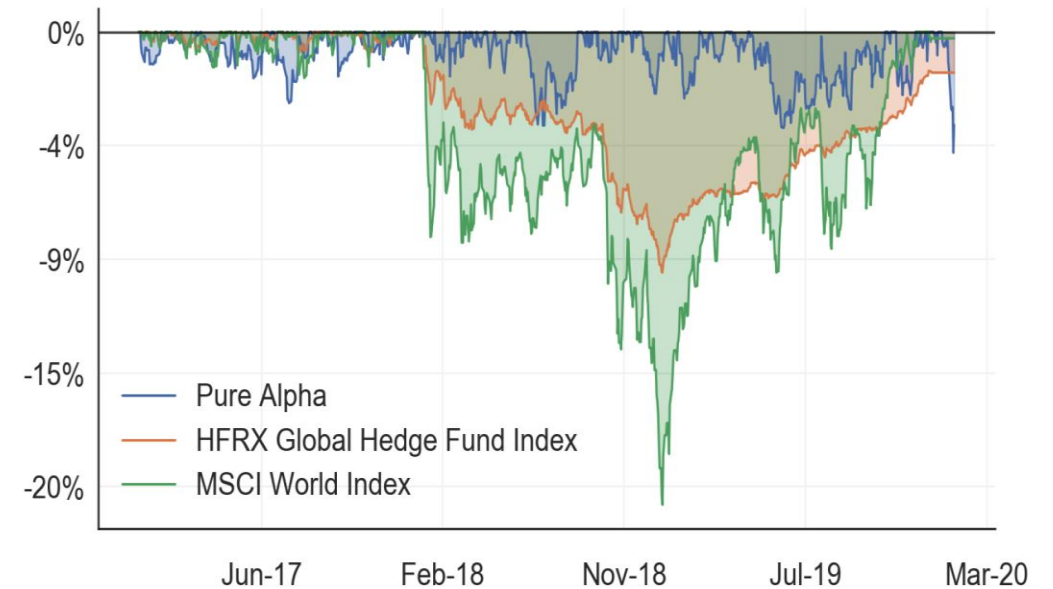
Strong Risk Control

Low drawdowns in all market conditions

Worst month comparison¹



Low maximum drawdown²



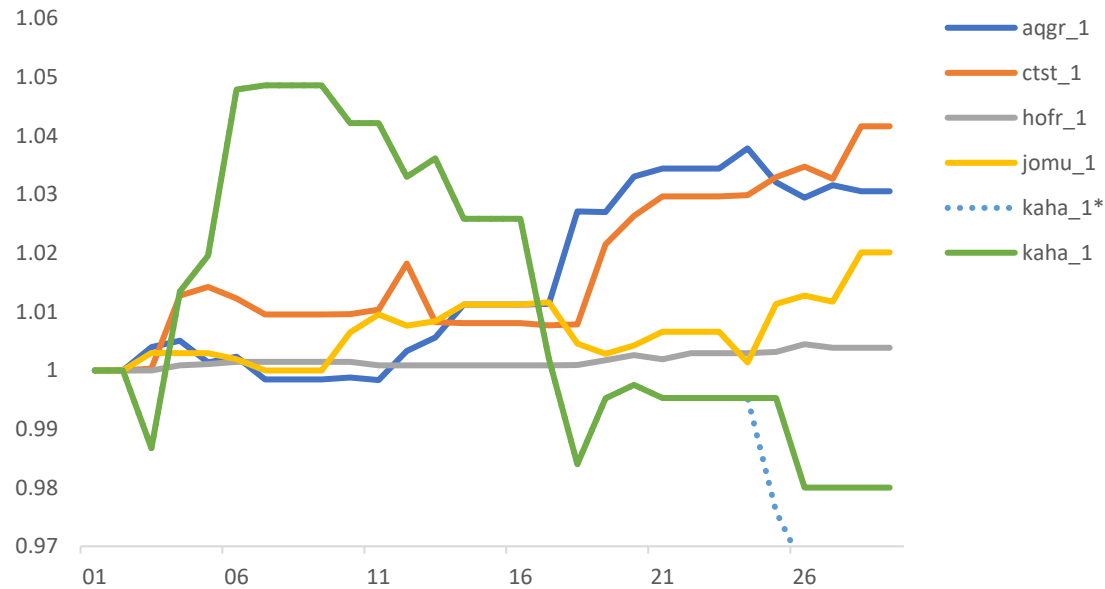
1 Returns during the worst performing months for MSCI World Index between Jan 2017 and Jan 2020

2 Daily maximum loss from a previously observed peak between Jan 2017 and Jan 2020

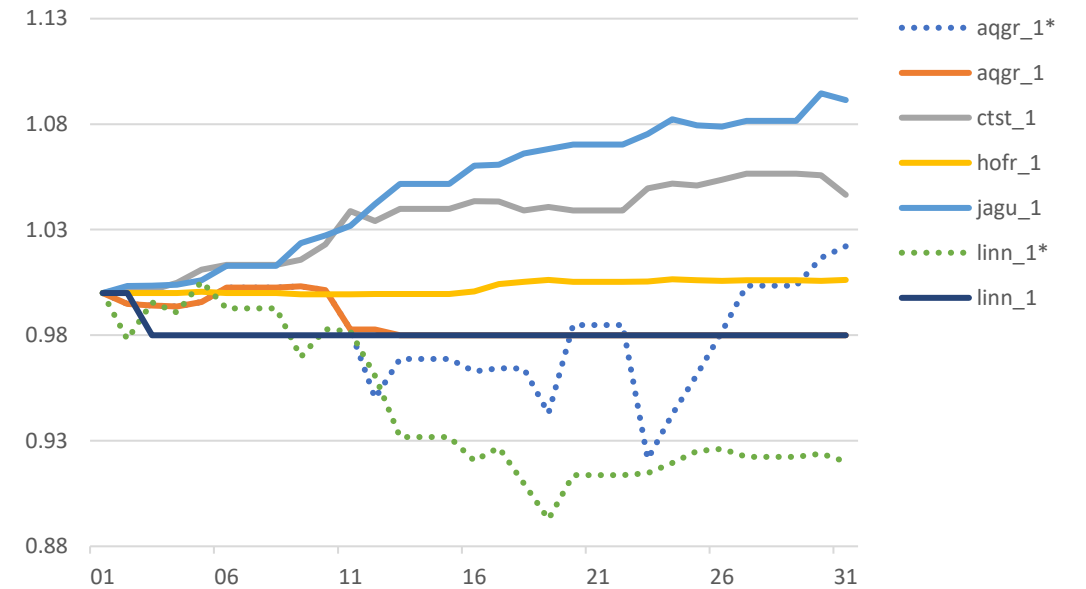
Strong Risk Control

Stop loss triggers are in place to avoid severe drawdowns

Strategy Performance with Stop Loss Feb 2020



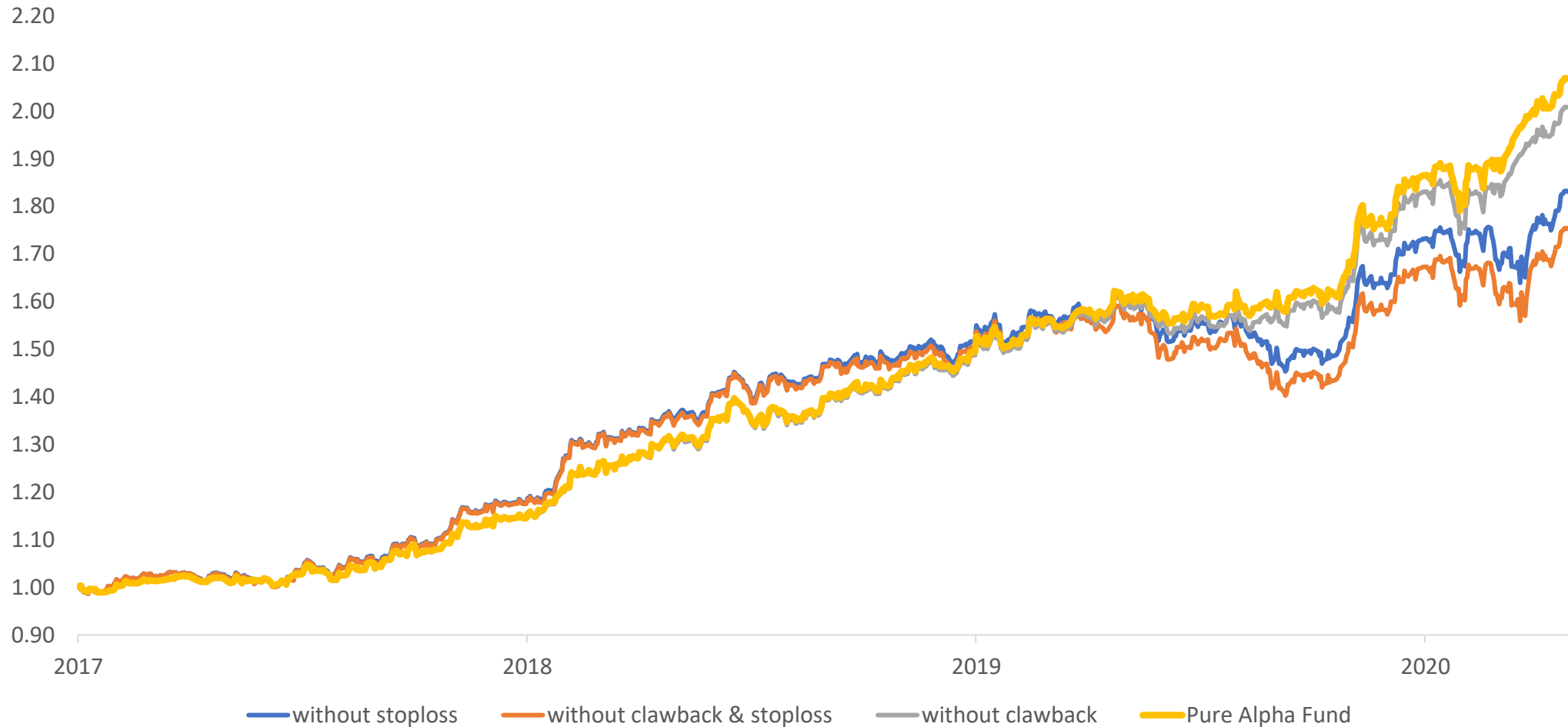
Strategy Performance with Stop Loss Mar 2020



* Strategy performance without stop loss

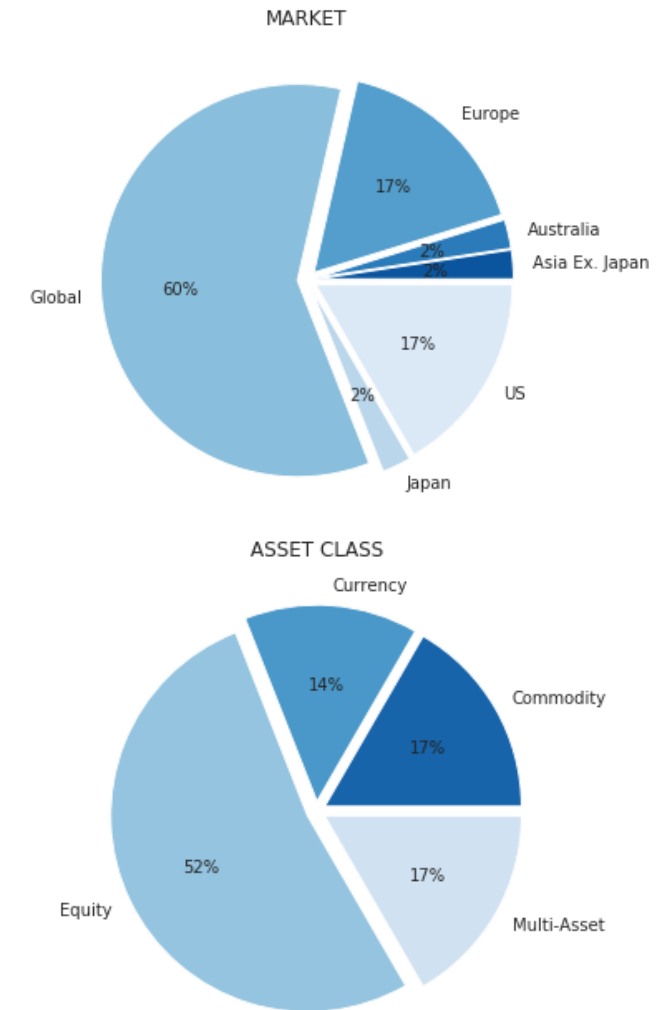
Strong Risk Control

The claw back and stop loss in place added an average return of 4.7% p.a.



Sourcing

- Our strategies come from all around the world and feature a diverse mix of asset classes and markets
- On-boarded strategies are required to have a track record of at least 2 years, with proven alpha returns (uncorrelated to beta)
- Current combined capacity of on-boarded strategies is over \$3 billion



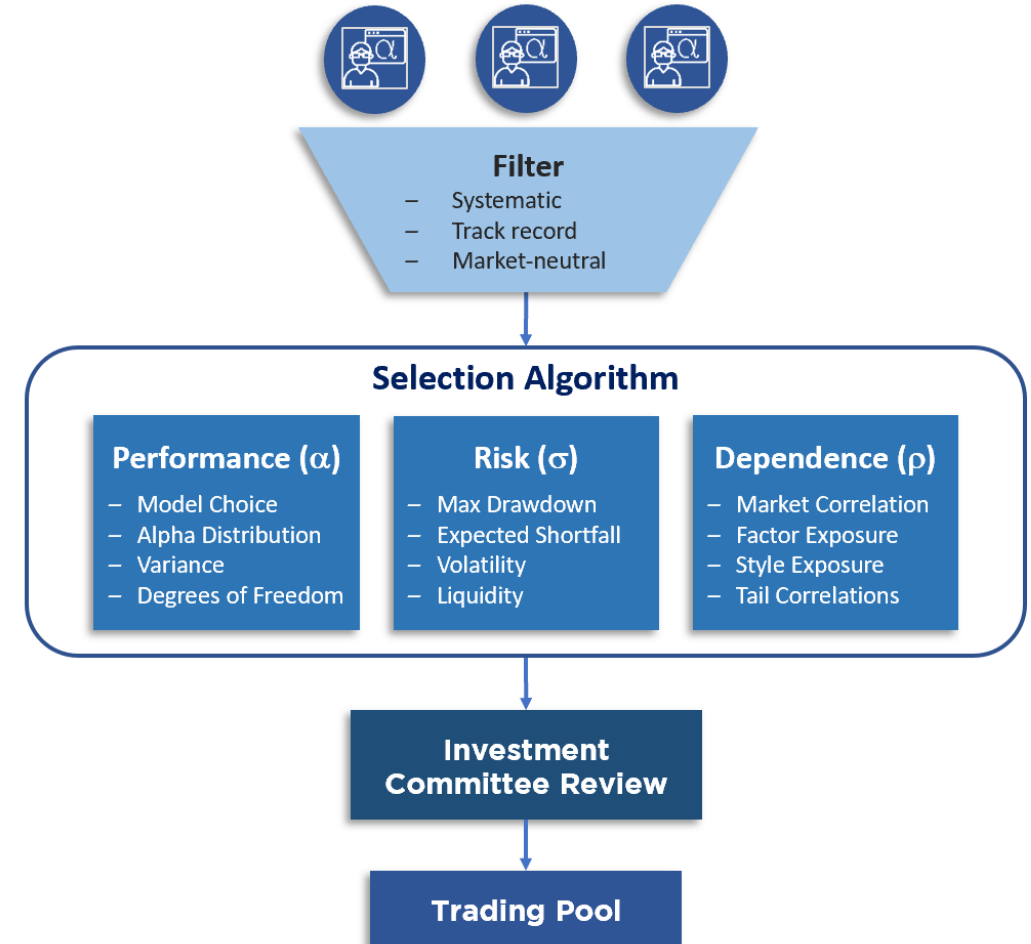
Selection

On selecting alpha partners, we employ three criteria:

- is systematic
- has minimum two-year track record
- is consistently market/factor neutral

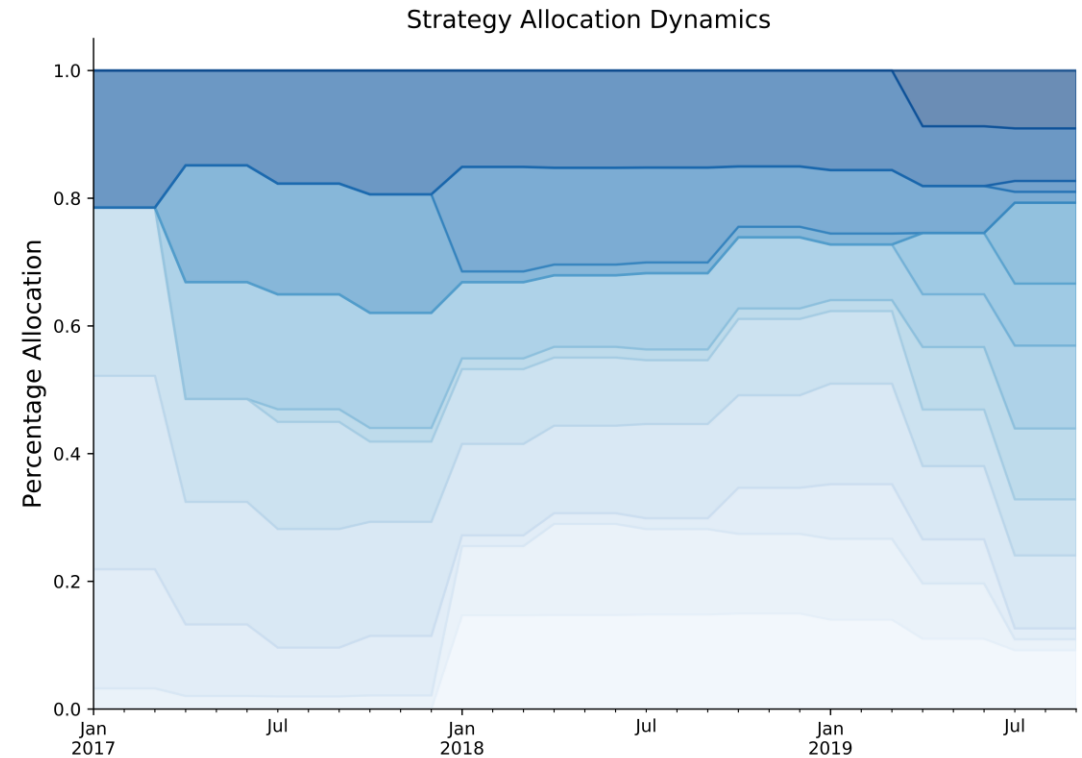
Our selection algorithms combine information on performance, risk and correlation to recommend strategies.

Recommended strategies are reviewed by our investment committee before capital allocation.

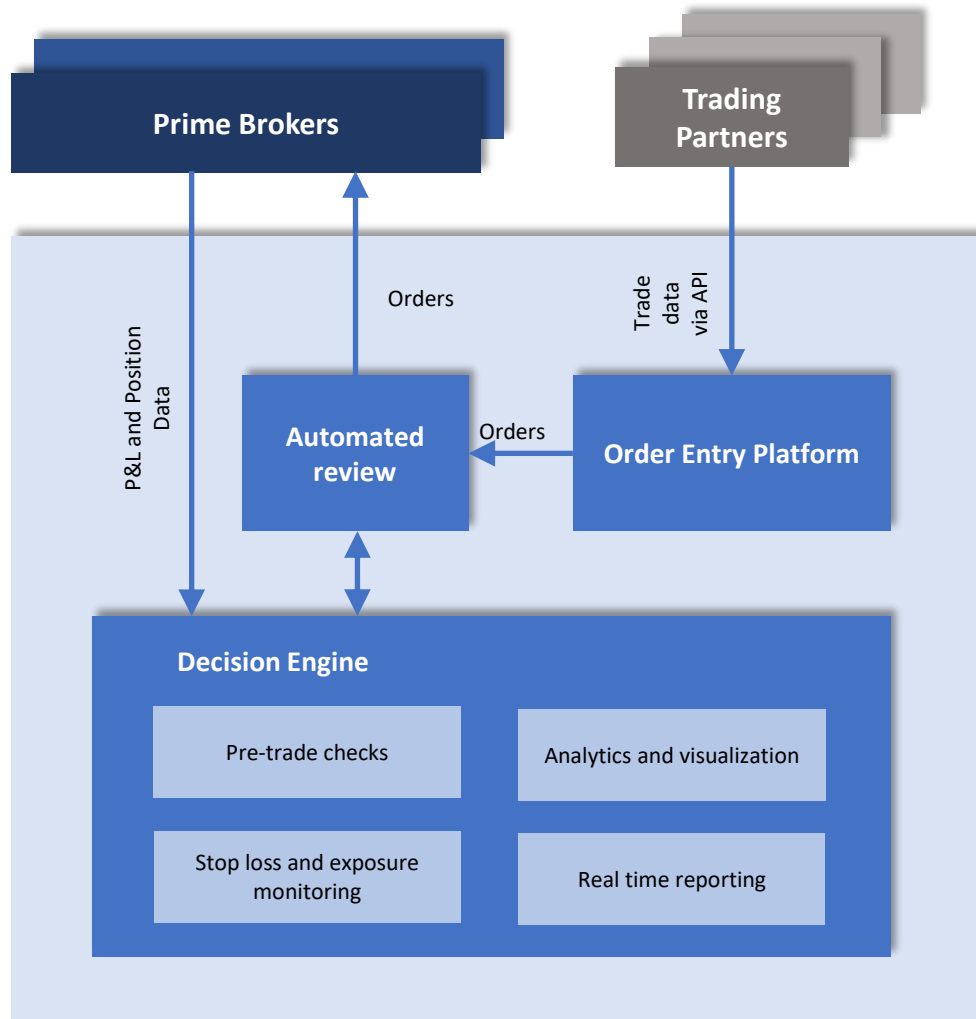


Allocation

- Capital allocation adapts to strategy performance and the external markets
- Automated algorithms calculate new allocations daily
- Allocation algorithm optimizes risk-returns as defined by investors



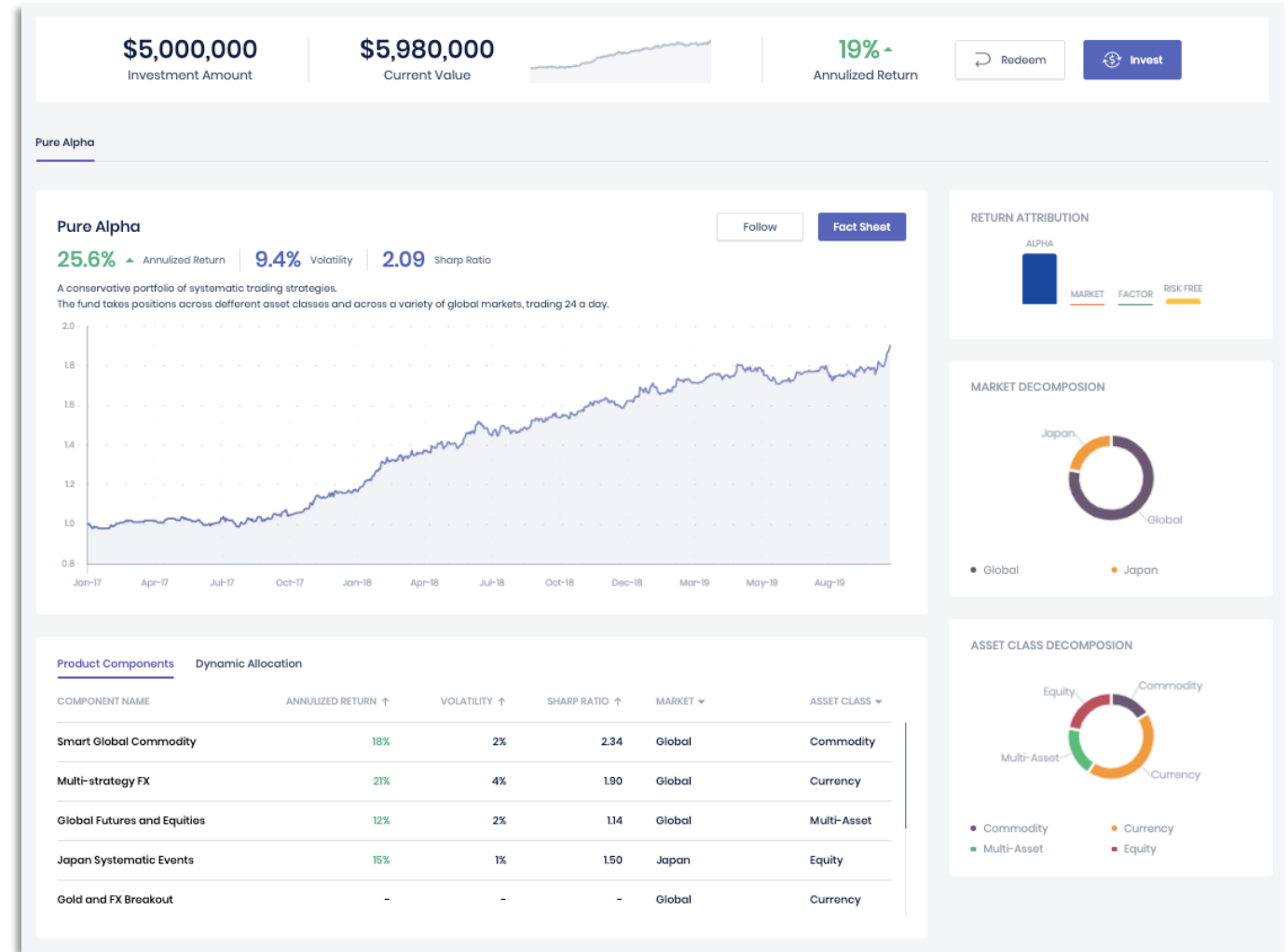
Risk Management



- REGULATED: Registered Fund Management Company under the MAS and a member of AIMA and SBAI.
- PRE-TRADE CHECKS: Trade parameters agreed during onboarding are automatically reviewed before all trading.
- REAL TIME RISK MANAGEMENT: Real-time monitoring of P&L, margins, exposures and concentration limits, regular review and analyses of all trading strategies
- STOP LOSS PROTECTION: Noviscent uses hard limits linked to automated closeout triggers.
- VISUALISATION AND REPORTING: Platform offers real time view on P&L and risk exposures.

Transparent Reporting

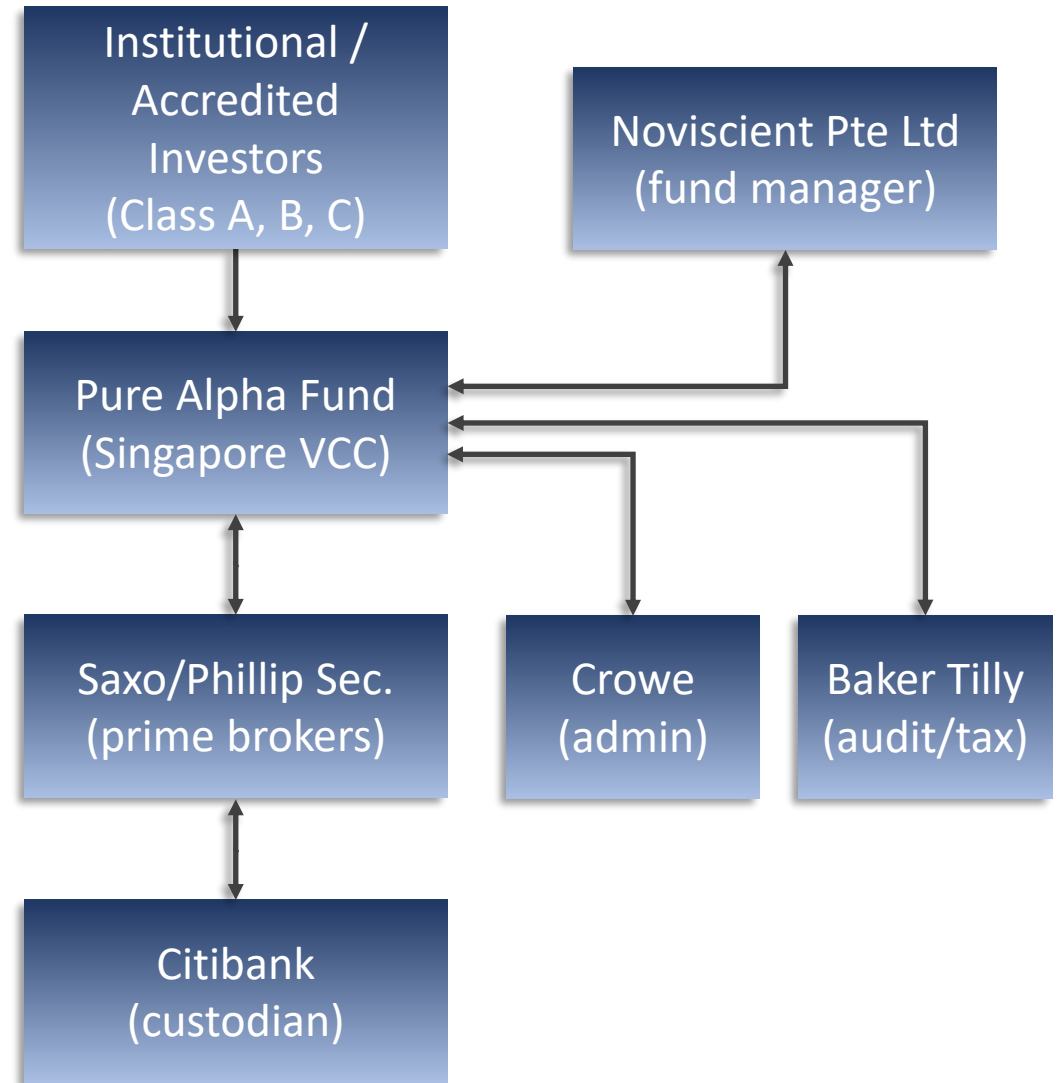
- Detailed analytics and visualization
- Real-time performance and position data
- Access via desktop and mobile applications
- Drill-down on performance and risk statistics
- Fund factsheet on demand



Appendix

Fund Structure and Terms

| | |
|----------------------|-------------------------------------|
| INVESTMENT UNIVERSE | Equities, futures, FX |
| MAS REGISTERED | Yes |
| MANAGEMENT FEE | 0% / 1% / 2% |
| PERFORMANCE FEE | 10% / 10% / 20% |
| HIGH WATER MARK | Yes |
| REDEMPTIONS | Monthly, 1 week notice |
| LOCK-UP | 1 Yr / 6 Mth / 1 Mth |
| MINIMUM SUBSCRIPTION | \$250,000 / \$5,000,000 / \$100,000 |
| PRIME BROKER | Saxo Bank, Phillip Securities |
| AUDITOR | Baker Tilly TFW LLP |
| ADMINISTRATOR | Crowe Horwath First Trust Services |
| LAWYER | WMH Law Corporation |



Experienced Team

An experienced team of investment and technology professionals with a mission to give investors access to high-quality fund managers from all around the world

Team

SCOTT TRELOAR, FOUNDER AND CIO

EDUCATION - PhD Fin (candidate) | MBA | MQF | BEng

SKILLS - Programming | Portfolio Mgt | Banking

EXPERIENCE - Sys HF | Deutsche Bank | Macquarie

MATTHEW O'BRIEN, CHIEF OPERATING OFFICER

EDUCATION - BBSA Finance

SKILLS - Operations | Portfolio Management | RegTech

EXPERIENCE - Pilgrim | Vulpes | Blue Ocean | GTO | Reuters

SERENA TIONG, CHIEF RISK OFFICER

EDUCATION - PhD Act Sciences | MSc Act Sci | BSc

SKILLS - Operations | Risk Management | Banking

EXPERIENCE - World Bank | Morgan Stanley | Julius Baer

ALLEN CHU, CHAIR INVESTMENT COMMITTEE

EDUCATION - BA Econ

SKILLS - Portfolio Management | Trading

EXPERIENCE - DymonAsia | Tudor | Citadel | GS

DENIS VOLOKH, CHIEF TECHNOLOGY OFFICER

EDUCATION - MSc Computer Science

SKILLS - Programming | Dev Ops | Architecture

EXPERIENCE - Sys HF | Com. Exchange | SingTel

ZOE ZHAO, BUSINESS MANAGER

EDUCATION - BSc (Econ)

SKILLS - Investment Management | Programming

EXPERIENCE - Morgan Stanley, Prudential, BAML

TAO JIA, QUANT DEVELOPER

EDUCATION - MSc Fin Eng | BSc Finance

SKILLS - Quantitative Finance | Programming

EXPERIENCE - GF Qianhe Investment

MING GUAN, QUANT ANALYST

EDUCATION - MSc Fin Eng | BSc Appl. Mathematics

SKILLS - Quantitative Finance | Programming

Advisors

RAY FERGUSON

EDUCATION - MBA | Fintech Certificate

SKILLS - Investment | Banking | Leadership

EXPERIENCE - Caber | StanChart | Singapore Life

JP LESCHLY NEERGAARD

EDUCATION - Harvard Business School

SKILLS - Investment Banking | Trading | Fintech

EXPERIENCE - Danske Bank | ICMA

KIM ROSENKILDE

EDUCATION - Harvard Business School

SKILLS - Banking | Trading | Business Development

EXPERIENCE - RKR Capital | ICAP | ABN Amro



Scott Treloar
Noviscent Pte Ltd
www.noviscent.com
+65 8168 5951
info@noviscent.com